



OCTOBER 2025

Hi Everyone

The end of this 2025 sailing and paddling season is fast approaching !

Time has flown by and we have been through a full mix of weather conditions since April which has both constrained activity but also given us some fantastic memories.

In August we noted water was being withdrawn from the lake to alleviate the drought (remember that !) conditions further downstream. Since then things literally went downhill with the lake level being dropped from around -3 metres in August to -10 metres in September.

We receive no advance notice of water level changes so this degree of variation causes problems not just for general access but also for moorings and the jetty management.

It has been mentioned before but remember you can check for level changes on the Natural Resource Wales website [Clywedog Lake level](#)

Coming up in October..

The club **ANNUAL GENERAL MEETING** is on Sunday 19th October at 11.00 am in the Clubhouse. We will try to make it as brief and painless as possible, there will be tea/coffee and biscuits provided. Weather permitting we will be able to get out onto the water for the last sail of the season.

WORK PARTY WEEKEND is the following weekend 25/26 Oct. As many hands on deck as possible please to help winterise the club assets. Here are some of the jobs that need to be done that weekend. Bring old clothes and gloves. If you can assist with any of the grounds items bring some tools if available.

Clubhouse

Galley - Empty , clean and turn off fridges.
Clean all surfaces, remove all rubbish and perishables.

Toilets - Gents fix flush, replace shower valves.
Deep clean and disinfect surfaces.

Main room General tidy, check first aid.

OD Office General tidy

Kit Shed

Move and check Sails, wetsuits, cags, BA's etc to main clubhouse room
Empty and check rib grab bags.

Work Boats/Water jobs

Check all moorings and take out loops.

Bring mooring weights above high waterline.

Bring in Racing Buoys (those with Pickup buoys leave out with weight)

Ribs and Scimitar to come ashore.

Jetty to go up the gulley and tied to bank.

Grounds

Take down signage and flag Move all tyres and shore rubbish to top of slip

Cut back Trees by OD box and shoreline near jetty. Cut hedges back.

Clear Area by outside tap. Tidy Lower garages. Rebuild brick BBQ

JUNIOR SAILING

We were pleased with the “**Get Onboard**” training sessions for our junior beginner sailors. We hope they enjoyed the sessions as much as the instructors.



We are looking at starting a similar program a little earlier next year to give participants a greater chance to develop their skill over the sailing season.



This endeavour requires considerable input in terms of back room support and instruction, with additional requests for instruction from adult members it looks like a busy year next year !

We welcome any additional support from you.

Llanidloes High School D of E Expedition 19th-20th September

The Llanidloes School D of E expedition used the clubhouse grounds for their overnight stop.



Well done to all for participating in the challenge, the club is happy to welcome and work with the school in this venture.

CANOE CLUB

Richard Anderson



The canoe club had its last outing on the lake on 25th September, with the nights closing in and a bout of bad weather on Thursdays prompting the decision to stop.

Richard is looking to continue with pool sessions at Llanidloes pool over the winter months.. more detail to follow.

Cruiser Corner and Boat Park

With the low lake level a number of boats have already been taken off the water. Please remember all craft should be removed by end of October.

DO NOT FORGET to remove any loops so as to return the mooring to the original length to avoid losing the buoy. Water level check on the Natural Resource Wales website [Clywedog Lake level](#)



Clubhouse , Galley and Security

Remember if you have used the galley facility then please wash up, dry and put away everything you have used.

If you are last to leave the clubhouse, make sure the water and all lights are turned off, the front door locked and both car park gates are closed and locked.

The access codes will change in the New Year, details on how to access the new code will be sent out with your membership renewal.

A reminder that empty boat trailers should not be left at the club.

The season will finish at the end of October when the clubhouse is closed and club kit put away for winter. You can still access the lake on those days when the weather is suitable but do so in line with the Lone sailing and Paddling policy which is listed towards the end of the newsletter.

A calender will come out soon for 2026.

In the meantime look forward to seeing you at the AGM and the workparty.

BUOYANCY AIDS (BA's) REMINDER

Please remember that at all times on the water and on the jetty you should be wearing a properly fitted buoyancy aid that is in good condition is a good fit, and preferably with leg straps. There have been recalls with certain imported brands so make sure your BA is also CE certified, Any doubts ask. **SUP waist aids** are not acceptable.

Juniors should wear a buoyancy aid if they are near the waters edge. We have already had to ask people to leave the water because they think they know better. Also please remember there is no swimming permitted in the lake.

This is a **no exception rule** and is part of the agreement with Hafren Dyfrdwy granting us use of the lake.

POLICY for LONE ACTIVITY SAILING and PADDLING

Hafren Dyfrdwy/Severn Trent has asked the Committee to advise members and visitors to follow guidelines to promote a safer environment for sailing/paddling without wishing to prohibit activity. Clywedog is a remote location so these precautions are in your own interest and will satisfy the Water Authority to allow us to continue to provide access.

Members choosing to use the lake when there is no scheduled safety cover must take into consideration the weather conditions and evaluate their abilities to handle an emergency situation without support.

This means:

- Be aware of the weather conditions and forecast.
- Wear appropriate clothing, a buoyancy aid and carry some means of attracting attention - there is some phone signal on the lake
- Let a 3rd party know your schedule, and have an emergency contact onshore. On water activities only during daylight hours.
- Canoeists and Paddle boarders are recommended to go out in 3's, and have an emergency contact onshore.

PADDLING and SAILING SAFETY GUIDANCE

On a bright day the lake looks inviting, if you intend going on the water then look at the advice from British Canoeing and Atoll SUP boards.

This advice echoes the Club lone sailing policy emphasising that with a bit of extra planning you can safely enjoy your paddling .

Their top tips are :

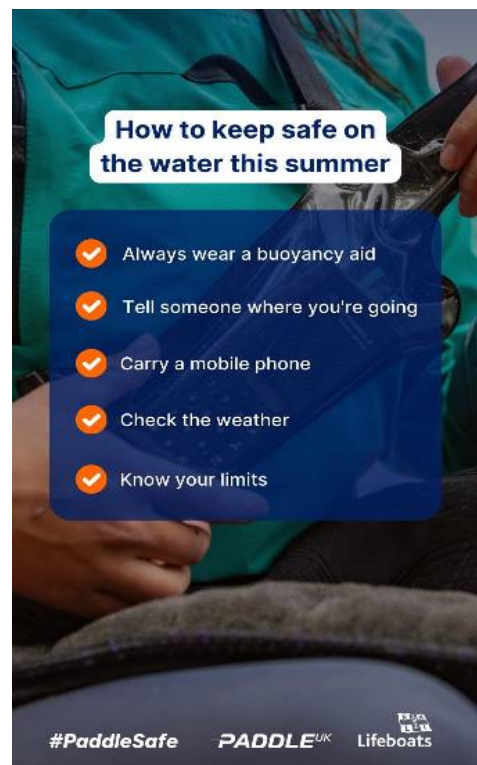
1. Check the weather, check the water
2. Plan your session
3. Be prepared for cold water and dress appropriately
4. Be a social paddler
5. Wear a buoyancy aid- make sure it fits, no rips or damage, CE mark.
6. Take a phone or VHF radio
7. Take spare clothes
8. Think about food and drink
9. Stay hydrated
10. Enjoy your paddling!

Follow the link to look for more detail...

<https://atollboards.com/how-to-dress-for-cold-water-paddling-even-if-you-dont-have-a-full-wet-suit/>

PADDLE
CYMRU

PADDLE^{UK}



USE OF CLUB EQUIPMENT POLICY

The Use of Club Equipment policy is intended to support members safely in the early stages of their sailing and paddlesports development.,

The club maintains a fleet of craft, including sailing dinghies, paddleboards, and kayaks as well as a selection of personal equipment for member's use during club instructor-led activity sessions. The club fleet is also used to run community-based events such as open days and taster sessions.

For the 2026 season there will continue to be no charge for member's use of club craft and equipment during club sessions.

Club instructor-led activity sessions, when there are appropriate qualified instructors and safety measures in place, are primarily:

- Sailing – Sundays
- Kayaking – Thursday evening canoe club
- Other ad-hoc and programmed events which will be communicated in advance

The club sessions are designed to provide a pathway for new members, those wishing to develop skills in the various disciplines, gain qualifications, progress in their chosen discipline, e.g., racing, or just to enjoy the activity as part of a group session. As such club craft and equipment are not generally available for casual use outside of the prescribed activities.

Use of club sailing dinghies is only permitted when safety cover is active on the lake, provided by a club helm who holds at least RYA PB2 certificate.

Don't forget: **Complete the relevant equipment log book so we have a record of usage.**

Members wishing to enjoy the activities on the lake outside of the club-led sessions are expected to follow the club lone sailing/paddling guidelines and to have a level of competency in the respective activity, be confident in their ability to self-rescue and to rescue others in their group, and to provide their own craft and personal equipment.

REMEMBER:

A proper fitting buoyancy aid is mandatory for all activity on the water .

Waist belt buoyancy aids are not permitted for use on the lake.

Useful Links:	
Club Website	https://clywedogsailing.org.uk
Newsletter: send news and pictures to...	paulfeely@btinternet.com
Original Graphics – thanks to Chris Dartnell	